

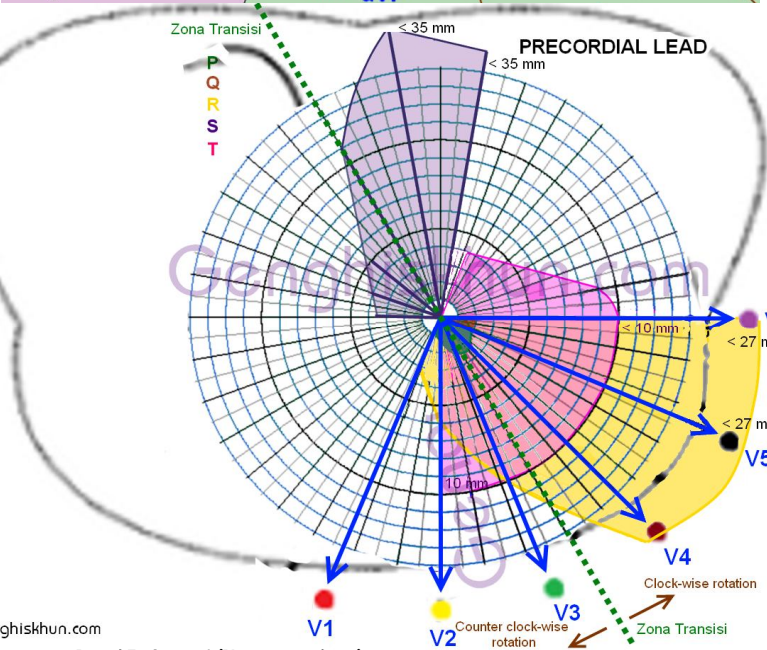
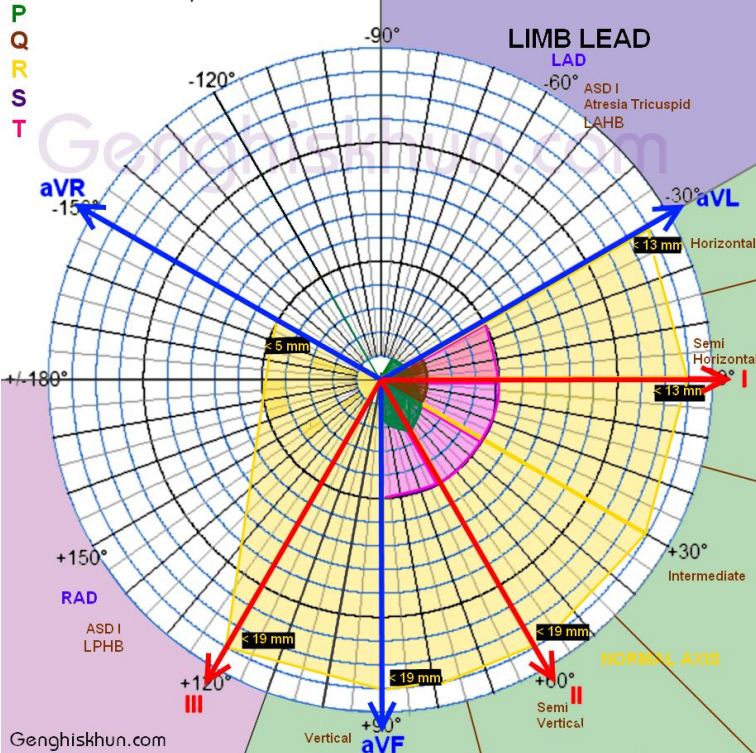
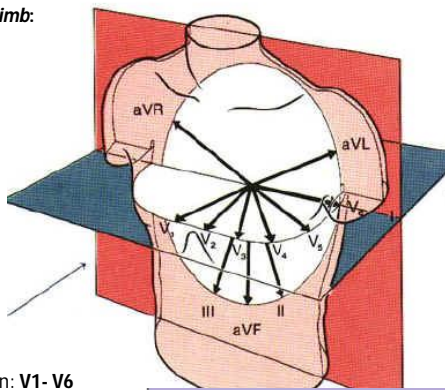
Lokasi Ekstremitas/ Limb:

R : Right (Kanan)
L : Left (Kiri)
F : Foot (Kaki Kiri)

Lokasi Precordial:

V1: SIC IV dx
V2: SIC IV Sin
V3: antara V2-V4
V4: SIC V mid clav sin
V5: Axilla antor sin
V6: Mid Axilla sin
V7: Axilla post sin
V8: Scapula post sin
V9: Tepi vertebra sin
V3R-9R - V1- V6, Rutin: V1- V6

Vektor EKG

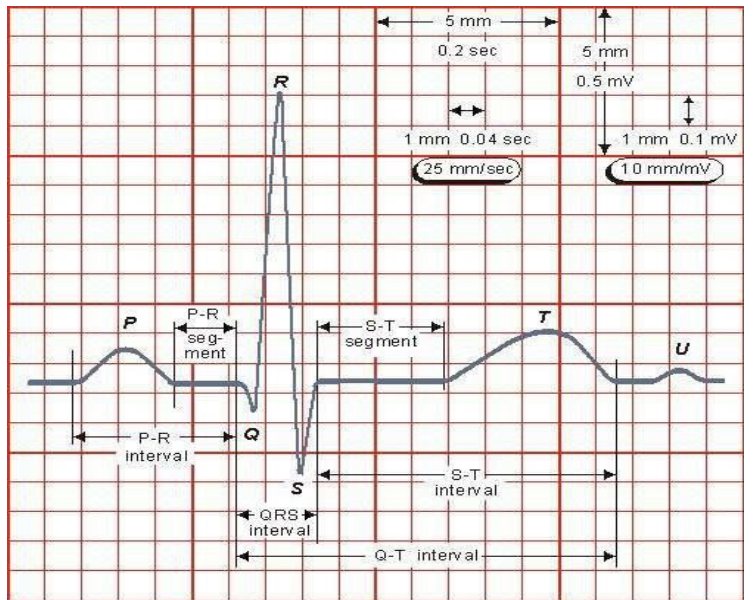


1. Rate/ Frekwensi (N: 60-100 x/mnt)

Regular : [R-R: 1500/Σ kotak kecil] atau [300/Σ kotak besar]
Irregular: Jumlah beat sepanjang 15 cm (30 kotak besar) x 10

2. Irama (Rhythm)

Sinus rhythm : glb P diikuti glb QRS-T



P	
N	II: Durasi < 0,12" (120 ms/ 3 mm) & tinggi < 2,5 mm (0.25mV)
Abn	Durasi > 0,12" = P mitral, tinggi > 2,5 mm = P Pulmonal

P-R Interval	
N	Dws : 0,12 - 0,20" (2,5-5 mm), Anak: 0,15 - 0,18"
Abn	Durasi < 0,12= pre-eksitasi: sindrom WPW (wolff parkinson white), LGL Durasi > 0,20= AV Block I

QRS	
N	Durasi < 0,12" (3 mm) Axis: -30° s/d 110°. (Resultan vektor Lead I & AVF. Jika hasilnya antara 0° s/d -90° => vs Lead II) Zona Transisi V3 - V4
Abn	Durasi > 0,12= BBB, hiperkalemia

Q	
N	Amplitudo/ Dalam < 0,04" (1 mm) selain lead III and AVR Amplitude < 1/3 R (R+S)
Abn	Glb Delta + (bypass SA ke BB), kdalaman & durasi > 1 mm, and/or < 25% Glb QRS

R	
N	RaVL < 13 mm (<0.13mV), RaVF ≤ 19 mm, RV5/ V6 < 2.7 mV (27 mm) RV5 + SV1/ SV2 < 3.5 mV (35 mm) Bifasik (defleksi + & - seimbang): III, aVL, V3, V4 (zona transisi) (+): I, II, aVF, V5, V6 ; (-): aVR, V1, V2
Abn	Hipertrofi Ventri.

S-T Sgmn & J-Point	
N	Amplitudo - 0,5 mm s/d + 2,5 mm, Elevasi (-)
Abn	Elevasi: >1 mm di Limb, >2mm di precordial => AMI, LBBB, perikarditis akut, variasi N Depresi: >5 mm: iskemik, hipertrofi ventrikel, emboli pulmonal, AMI posterior (Ischaemic -> less ATP -> less NaK atpase -> higher K+ outside cell -> lower RMP -> ST depression)

Q-T Interval	
N	Durasi 0,3"-04" (10 mm)
Abn	Durasi < 0,3" : Short QT synd Durasi >0,4": Long QT syndr

T	
N	Inverted: < 1 mm di V1 and aVR < 5 mm Limb lead < 10 mm Precord
Abn	iskemi/infark? kelainan elektrolit?

U	
N	< 1,5 mm

© 2013 Genghis Khun, <http://genghiskhun.com>

		Frekuensi (x/mnt)							
		30	40	50	60	100	150	250	400
Supra Ventrikuler P (+)	SA Node	Sinus Bradikardi		Sinus N		Sinus Takhikardi			
	Atrial			Atrial Prematur		Atrial Tkhikardi Atrial = Ventr		Atrial Flutter (pacemaker 1) - gergaji/ saw tooth Atrial > Ventr	
	AV junct	Junctional		Accelerated Junct.		Junct. Takhikardi		Atrial Fibrilasi (pacemaker >1): - Coarse - Fine (bergetar) Atrial > Ventr	
Ventr. (P -)		Ventr.		Accelerated Ventr.		Ventr. Takhikardi Non Sustained < 30" Sustaine > 30"		Ventr. Flutter Fibrilasi - Coarse - Fine (bergetar)	

Rujukan: Surya Dharma, Pedoman Praktis Sistematis Interpretasi EKG, Penerbit Buku Kedokteran EGC, 2010